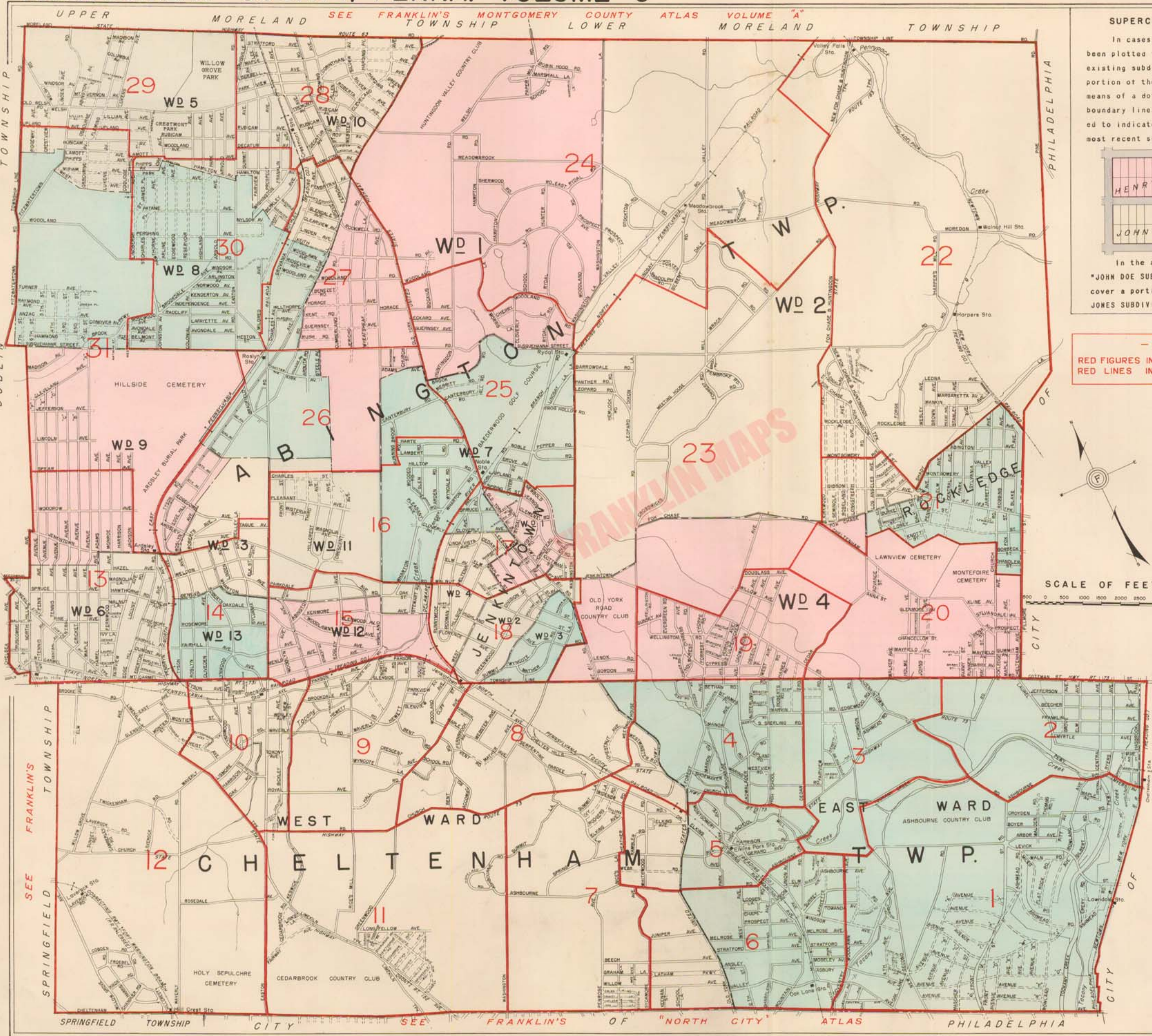


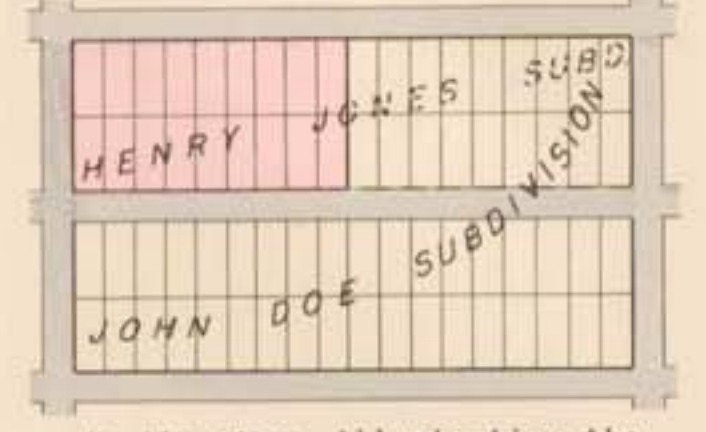
MONTGOMERY COUNTY, PENNA. VOLUME C

INDEX MAP



SUPERCEDED SUBDIVISIONS

In cases where a subdivision has been plotted to cover a portion of an existing subdivision, that superceded portion of the subdivision is shown by means of a dotted name and a broken boundary line and the tints are intended to indicate the area covered by the most recent subdivision, thus:-



In the above illustration, the "JOHN DOE SUBDIVISION" was plotted to cover a portion of the existing "HENRY JONES SUBDIVISION".

- NOTE -
RED FIGURES INDICATE PLATE NUMBERS.
RED LINES INDICATE PLATE LIMITS.

BUILDING & PROPERTY LEGEND

[Symbol]	Frame Building
[Symbol]	Brick Building
[Symbol]	Stone or Concrete Building
[Symbol]	Iron or Ironclad Building
[Symbol]	1st Story Brick, 2nd Story Frame
[Symbol]	1st Story Stone, 2nd Story Frame
[Symbol]	1/2 Stone or Brick, 1/2 Frame
[Symbol]	Greenhouse
[Symbol]	Garage, Barn or Outbuilding
[Symbol]	House Number
[Symbol]	Dimensions
[Symbol]	Acres
[Symbol]	DANITA HOSIERY MILLS Business Name
[Symbol]	John Doe Owner's Name
[Symbol]	59 Registry Block Number
[Symbol]	20 Registry Lot Number
[Symbol]	OGONIZ PARK Original Subdivision Name
[Symbol]	20 Original Subdivision Block Number
[Symbol]	01 Original Subdivision Lot Number
[Symbol]	"BROOKWOOD" Farm or Manor Name

STREET LEGEND

[Symbol]	Paved Street or Drive
[Symbol]	Unpaved Street or Drive
[Symbol]	Unopened Street or Drive
[Symbol]	Old or Former Street Name
[Symbol]	Block Dimension (SHOWN ONLY IN ROCKLEDGE)
[Symbol]	Street Width
[Symbol]	6 in. Water Main, Size & Hydrant
[Symbol]	Sewer Line
[Symbol]	Bus Line & Route Letter
[Symbol]	Trolley Line
[Symbol]	ST HWY RT 73 State Highway Route Number

MISCELLANEOUS LEGEND

[Symbol]	Electric Railroad
[Symbol]	Steam Railroad
[Symbol]	Ward Line
[Symbol]	2ND WARD Ward Name or Number
[Symbol]	Township or Borough Line
[Symbol]	23 Adjoining Plate Number

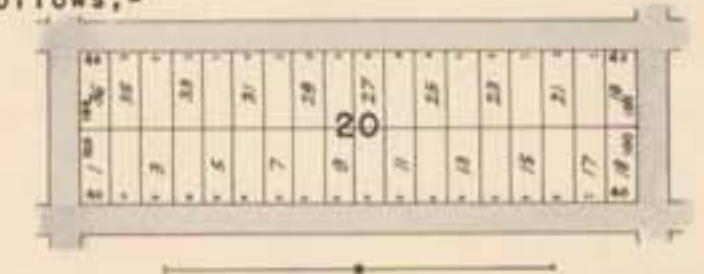


SCALE OF FEET
0 500 1000 1500 2000 2500 3000 3500

COUNTY BOARD OF ASSESSMENT BLOCK & LOT NUMBERS

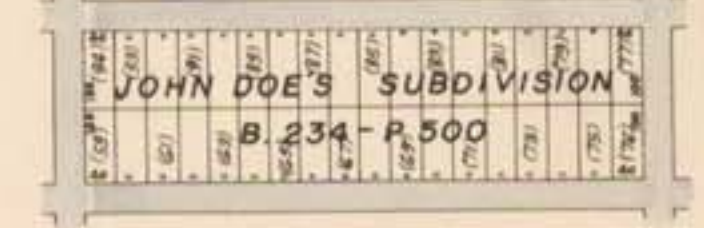
The Montgomery County Commissioners have prepared an Official block and lot Registry System to apply to the properties in Abington and Cheltenham Townships. This system is intended to simplify the proper identification of every parcel of land for taxing purposes.

These numbers are set forth in this Atlas as follows:-



ORIGINAL SUBDIVISIONS

Original Subdivisions and their respective lot numbers as filed in the Recorder of Deeds' Office at Norristown are shown thus:-



The Official Registry block and lot numbers, and the original subdivisions with their respective lot numbers as shown in this volume, affords the subscribers to this Atlas the first opportunity of referring to this information in map form.