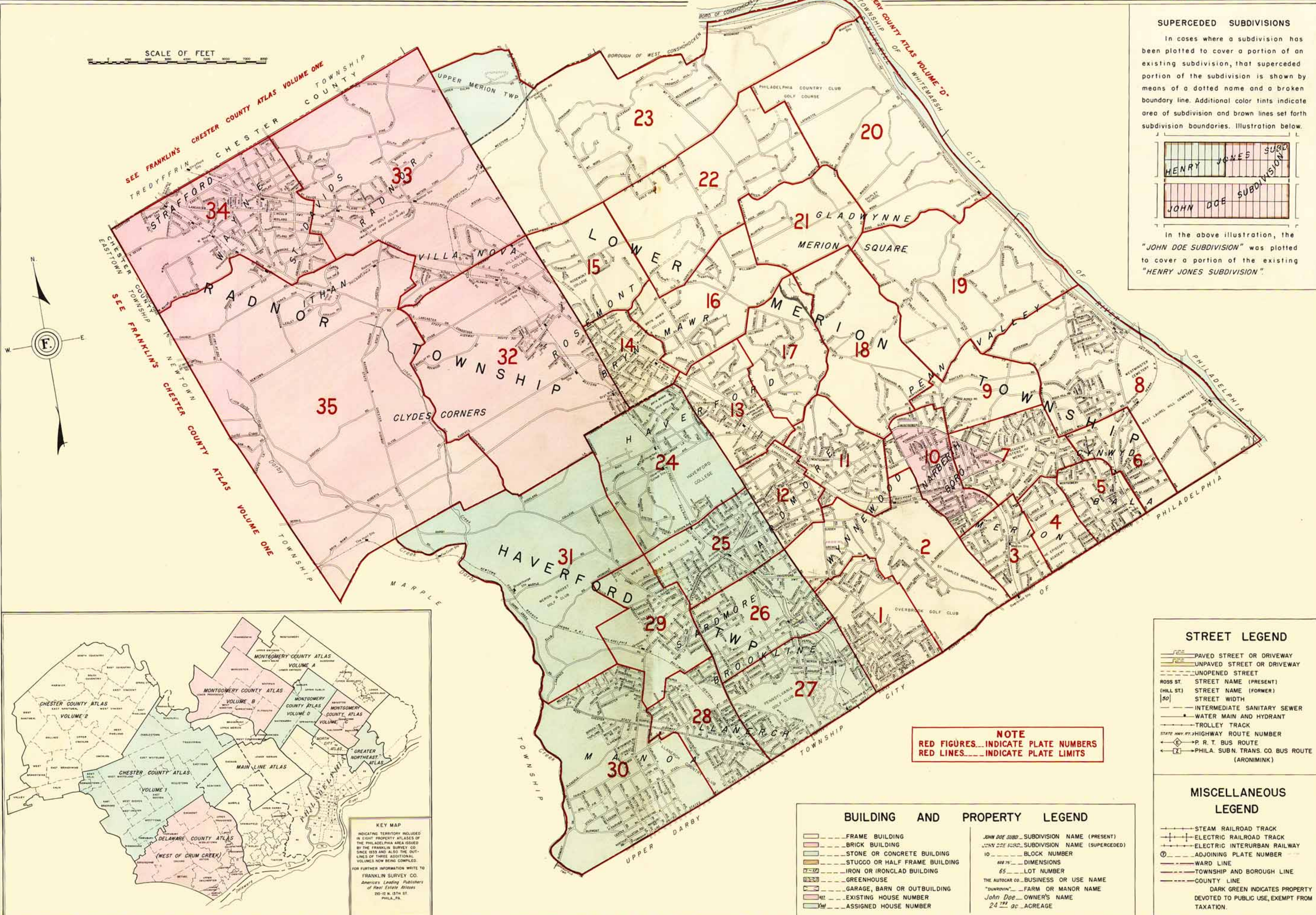


# MAIN LINE ATLAS

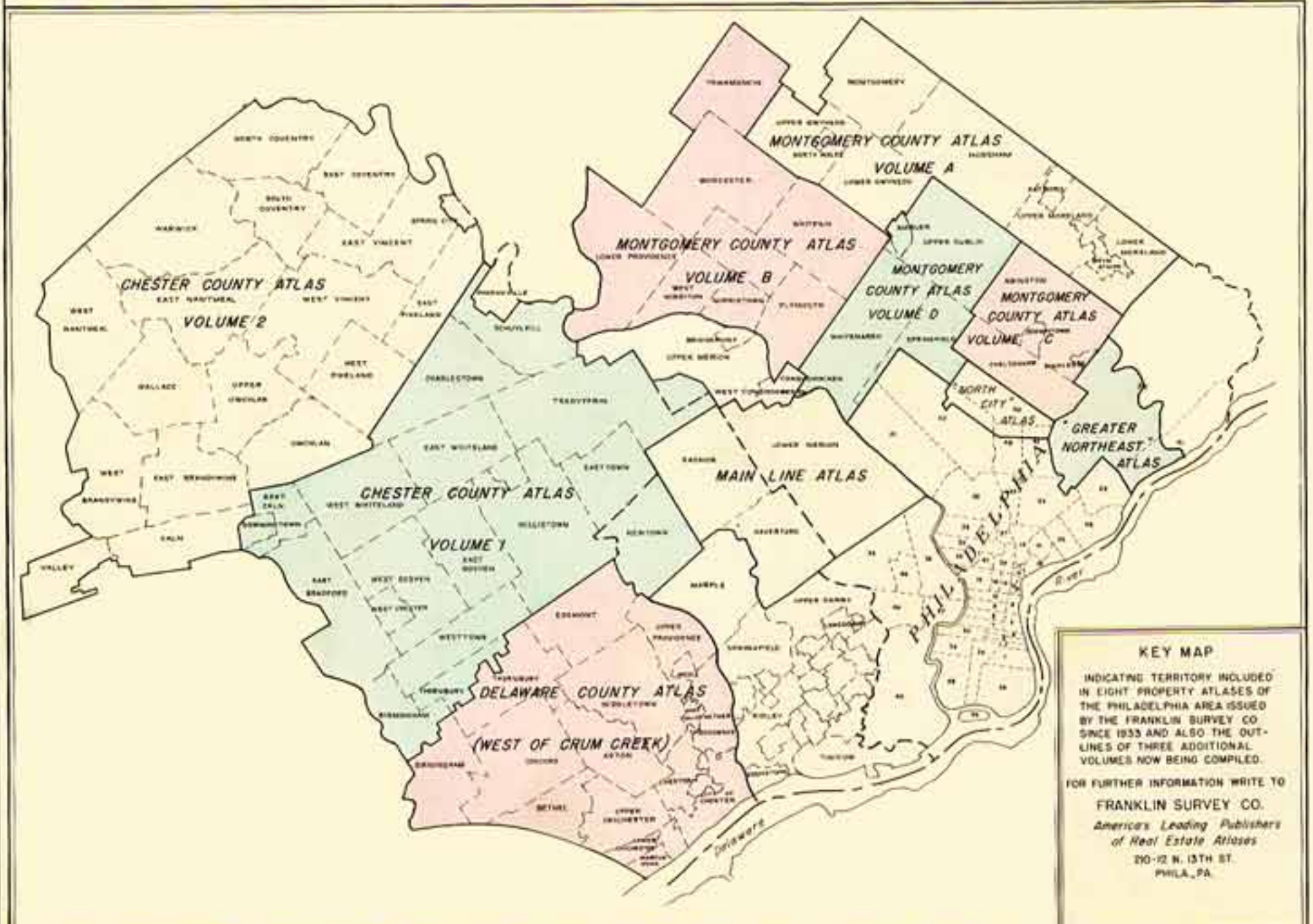
# INDEX MAP

SCALE OF FEET  
0 1000 2000 3000 4000 5000



**SUPERCEDED SUBDIVISIONS**  
In cases where a subdivision has been platted to cover a portion of an existing subdivision, that superceded portion of the subdivision is shown by means of a dotted name and a broken boundary line. Additional color tints indicate area of subdivision and brown lines set forth subdivision boundaries. Illustration below.

In the above illustration, the "JOHN DOE SUBDIVISION" was platted to cover a portion of the existing "HENRY JONES SUBDIVISION."



**NOTE**  
RED FIGURES...INDICATE PLATE NUMBERS  
RED LINES...INDICATE PLATE LIMITS

**BUILDING AND PROPERTY LEGEND**

[Symbol]	FRAME BUILDING	[Symbol]	JOHN DOE SUBD. SUBDIVISION NAME (PRESENT)
[Symbol]	BRICK BUILDING	[Symbol]	JOHN DOE SUBD. SUBDIVISION NAME (SUPERCEDED)
[Symbol]	STONE OR CONCRETE BUILDING	[Symbol]	10'... BLOCK NUMBER
[Symbol]	STUGGO OR HALF FRAME BUILDING	[Symbol]	60' x 75'... DIMENSIONS
[Symbol]	IRON OR IRONCLAD BUILDING	[Symbol]	65'... LOT NUMBER
[Symbol]	GREENHOUSE	[Symbol]	THE AUTOCAR CO. BUSINESS OR USE NAME
[Symbol]	GARAGE, BARN OR OUTBUILDING	[Symbol]	"DUNROVIN" FARM OR MANOR NAME
[Symbol]	EXISTING HOUSE NUMBER	[Symbol]	John Doe OWNER'S NAME
[Symbol]	ASSIGNED HOUSE NUMBER	[Symbol]	24 1/2 ac. ACREAGE

**STREET LEGEND**

[Symbol]	PAVED STREET OR DRIVEWAY
[Symbol]	UNPAVED STREET OR DRIVEWAY
[Symbol]	UNOPENED STREET
[Symbol]	ROSS ST. STREET NAME (PRESENT)
[Symbol]	(HILL ST.) STREET NAME (FORMER)
[Symbol]	STREET WIDTH
[Symbol]	INTERMEDIATE SANITARY SEWER
[Symbol]	WATER MAIN AND HYDRANT
[Symbol]	TROLLEY TRACK
[Symbol]	STATE HWY. #7. HIGHWAY ROUTE NUMBER
[Symbol]	P. R. T. BUS ROUTE
[Symbol]	PHILA. SUBN. TRANS. CO. BUS ROUTE (ARONIMINK)

**MISCELLANEOUS LEGEND**

[Symbol]	STEAM RAILROAD TRACK
[Symbol]	ELECTRIC RAILROAD TRACK
[Symbol]	ELECTRIC INTERURBAN RAILWAY
[Symbol]	ADJOINING PLATE NUMBER
[Symbol]	WARD LINE
[Symbol]	TOWNSHIP AND BOROUGH LINE
[Symbol]	COUNTY LINE
[Symbol]	DARK GREEN INDICATES PROPERTY DEVOTED TO PUBLIC USE, EXEMPT FROM TAXATION.