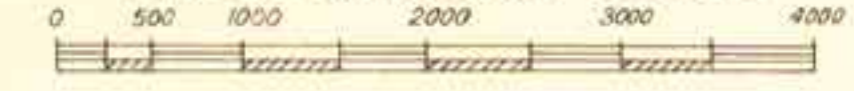


TOWNSHIP OF

EAST COVENTRY

Scale: 1000 feet = 1 inch



- LEGEND**
- FRAME BUILDING
 - BRICK BUILDING
 - STONE OR CONCRETE
 - STONE OR BRICK 1/2 FRAME 2nd
 - STABLE OR GARAGE
 - GREEN HOUSE
 - IRON OR IRONCLAD
 - STEAM RAILROAD
 - TOWNSHIP OR BOROUGH LINE
 - MINES
 - QUARRIES
 - WATER PIPE & SIZE
 - PAVED STREET OR DRIVE
 - UNPAVED STREET OR DRIVE
 - FIRE HYDRANT
 - ADJOINING PLATE
 - ELECTRIC HIGH TENSION OR TRANSMISSION LINES

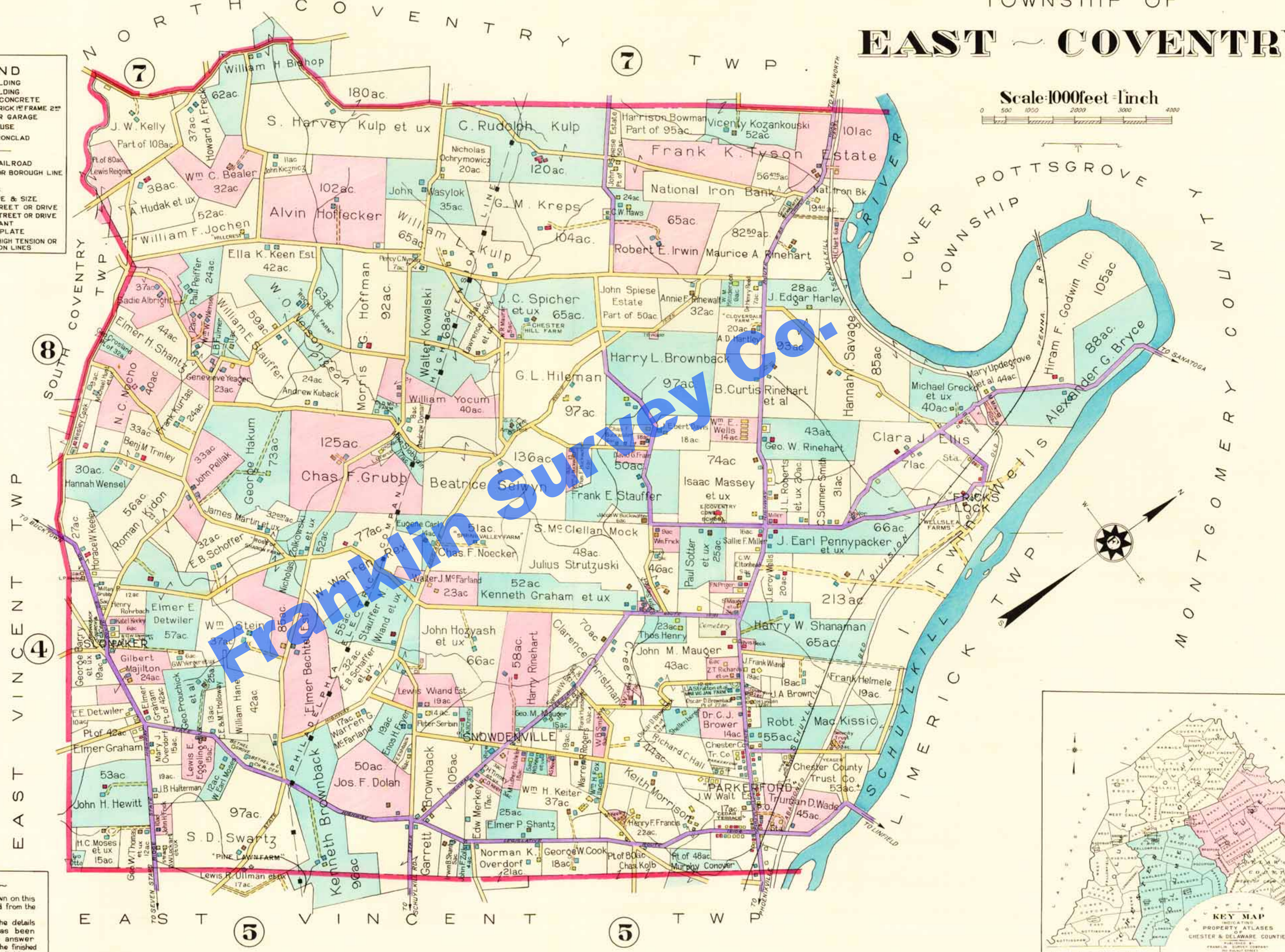


TABLE OF CONTENTS

VOLUME ONE

- BIRMINGHAM TWP. 23
- CHARLESTOWN TWP. 13
- DOWNTOWN BORO. 26
- EAST TOWN TWP. 6, 7, 8
- EAST BRADFORD TWP. 24, 25
- EAST CALN TWP. 25
- EAST GOSHEN TWP. 16
- EAST WHITELAND TWP. 12
- MALVERN BORO. 11
- SCHUYLKILL TWP. 14
- THORNBURY TWP. 22
- TREDFRIN TWP. 1, 2, 3, 4, 5, 6
- WEST TOWN TWP. 22
- WEST CHESTER BOROUGH. 22
- WEST GOSHEN TWP. 17
- WEST WHITELAND TWP. 15
- WILLISTOWN TWP. 10

VOLUME TWO

- CALN TWP. 18
- EAST BRANDYWINE TWP. 14
- EAST COVENTRY TWP. 6
- EAST NANTMEAL TWP. 10, 11
- EAST PIKELAND TWP. 1
- EAST VINCENT TWP. 4, 5
- NORTH COVENTRY TWP. 7
- SOUTH COVENTRY TWP. 8
- UPPER LWCHLAN TWP. 12
- UWCHLAN TWP. 13
- VALLEY TWP. 19
- WALLACE TWP. 15
- WARWICK TWP. 9, 10
- WEST BRANDYWINE TWP. 17
- WEST NANTMEAL TWP. 16
- WEST PIKELAND TWP. 2
- WEST VINCENT TWP. 3, 4

SEE FRANKLIN INDEX MAP OF CHESTER COUNTY PA.

PUBLISHER'S NOTE

The acreage and owners' names shown on this Atlas are based upon records obtained from the 1934 official assessment list.

However, due to the magnitude of the details involved, supplementary information has been rendered by many property owners, in answer to our questionnaire, thus enabling the finished edition to be complete, accurate and reliable.

