

PARTS OF EAST VINCENT AND WEST VINCENT TOWNSHIPS

Scale 1000 feet = 1 inch

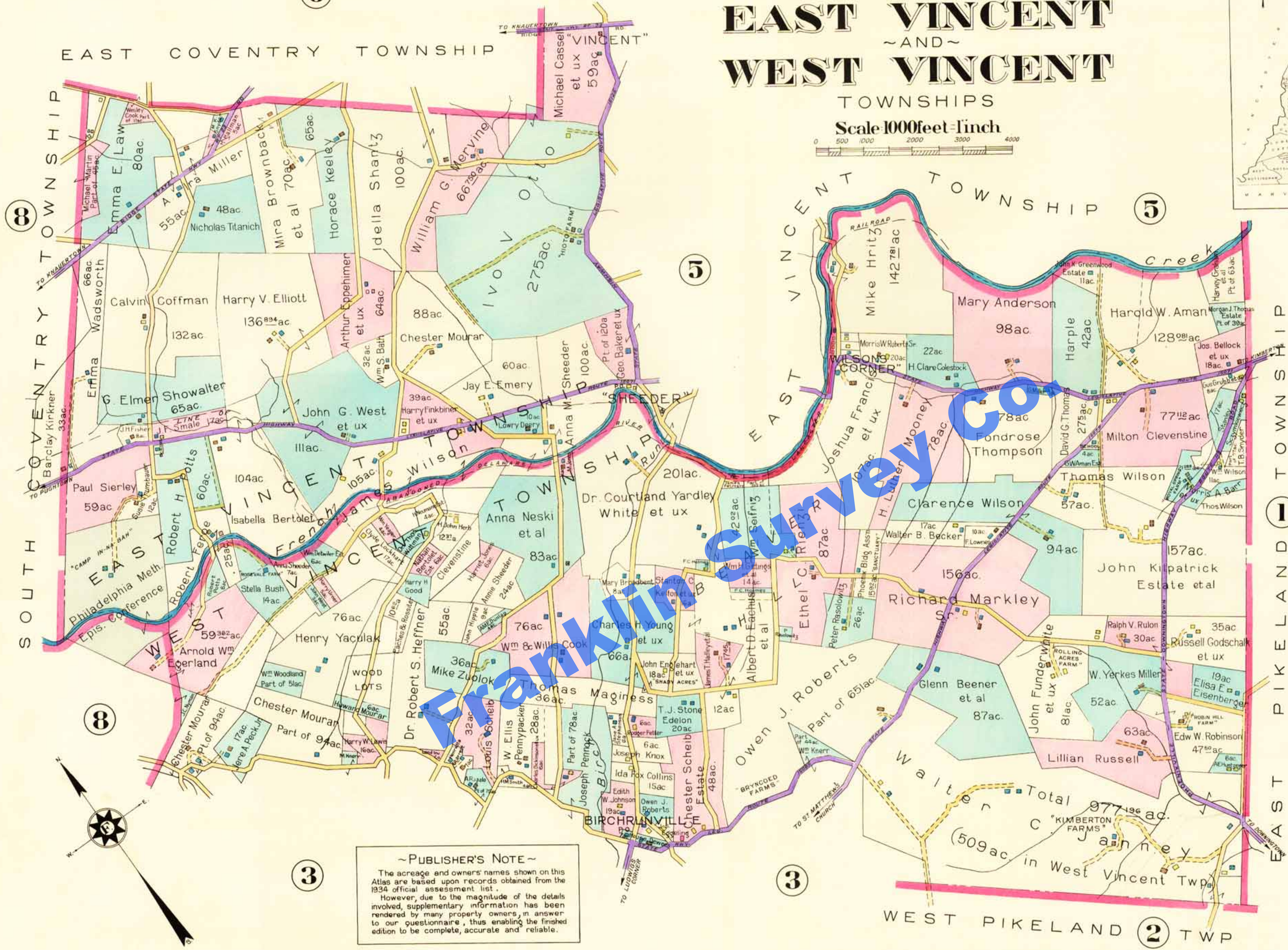
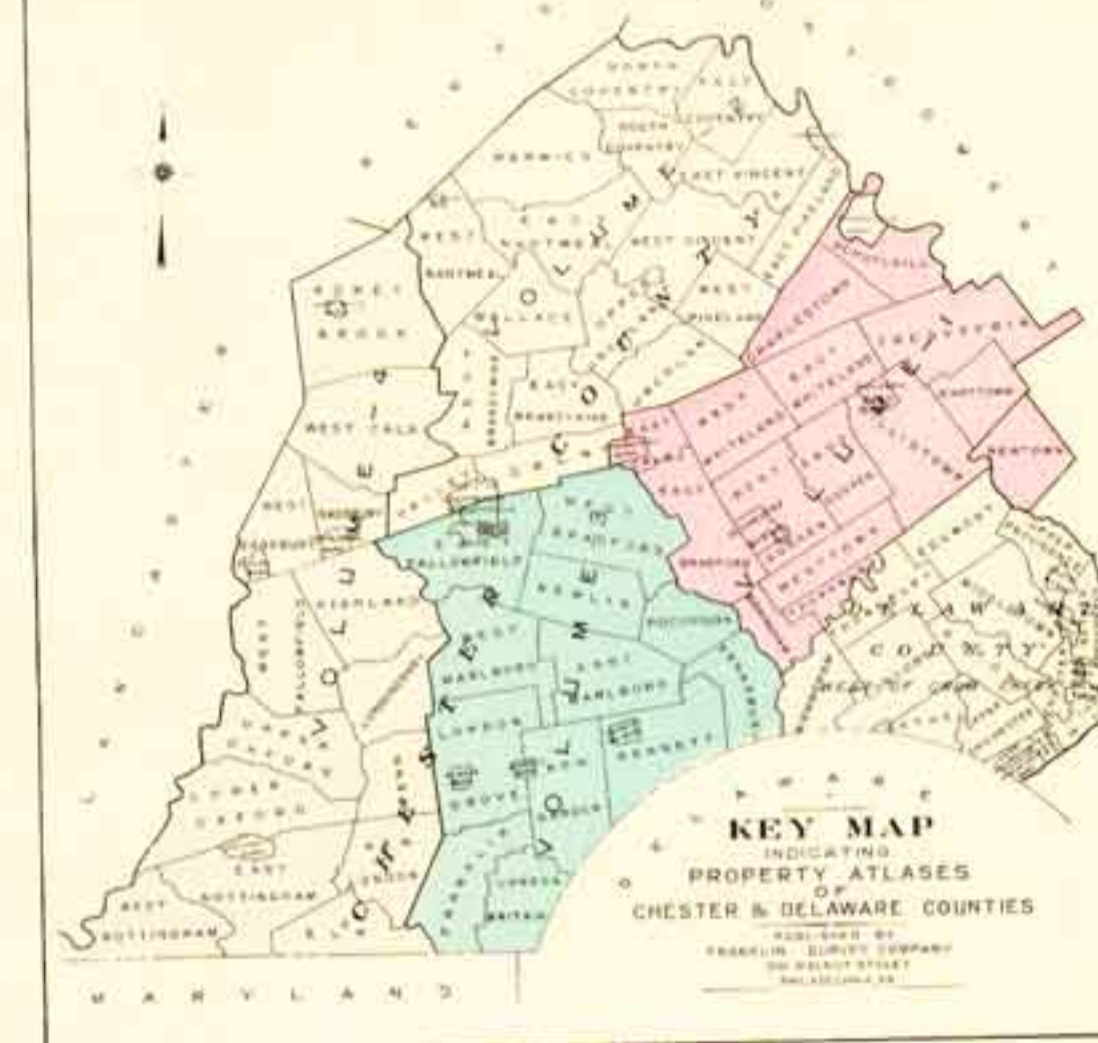
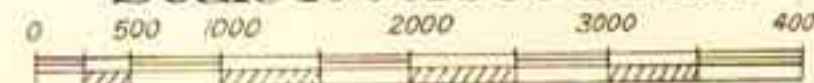


TABLE OF CONTENTS VOLUME ONE BIRMINGHAM TWP. 23 CHARLESTOWN TWP. 13 DOWNINGTOWN BORO. 26 EAST TOWN TWP. 6, 7, 8 EAST BRADFORD TWP. 24, 25 EAST CALN TWP. 25 EAST GOSHEN TWP. 16 EAST WHITELAND TWP. 12 MALVERN BORO. 11 SCHUYLKILL TWP. 14 THORNBURY TWP. 22 TREDYFFRIN TWP. 1, 2, 3, 4, 5, 6 WEST TOWN TWP. 22 WEST CHESTER BORO. 10, 11 WEST GOSHEN TWP. 17 WEST WHITELAND TWP. 15 WILLISTOWN TWP. 10 VOLUME TWO CALN TWP. 18 EAST BRANDYWINE TWP. 14 EAST COVENTRY TWP. 6 EAST NANTMEAL TWP. 10, 11 EAST PIKELAND TWP. 1 EAST VINCENT TWP. 1 NORTH COVENTRY TWP. 7 SOUTH COVENTRY TWP. 8 UPPER UNCHLAN TWP. 12 UNCHLAN TWP. 13 VALLEY TWP. 19 WALLACE TWP. 15 WARWICK TWP. 9, 10 WEST BRANDYWINE TWP. 17 WEST NANTMEAL TWP. 16 WEST PIKELAND TWP. 2 WEST VINCENT TWP. 34 SEE FRANKLIN INDEX MAP OF CHESTER COUNTY PA.

LEGEND: FRAME BUILDING, BRICK BUILDING, STONE OR CONCRETE, STABLE OR GARAGE, GREEN HOUSE, IRON OR IRONCLAD, STEAM RAILROAD, TOWNSHIP OR BOROUGH LINE, MINES, QUARRIES, WATER PIPE & SIZE, PAVED STREET OR DRIVE, UNPAVED STREET OR DRIVE, FIRE HYDRANT, ADJOINING PLATE, ELECTRIC HIGH TENSION OR TRANSMISSION LINES

PUBLISHER'S NOTE: The acreage and owners names shown on this Atlas are based upon records obtained from the 1934 official assessment list. However, due to the magnitude of the details involved, supplementary information has been rendered by many property owners, in answer to our questionnaire, thus enabling the finished edition to be complete, accurate and reliable.